

# Celebrating Nurses Week!

CUPE 905 represents over 700 public health and long-term care nursing staff. Thank you for the work you do to support and serve our communities.

Send a message of solidarity and gratitude to these frontline heroes at [Serving905communities.com/get-involved](https://Serving905communities.com/get-involved)

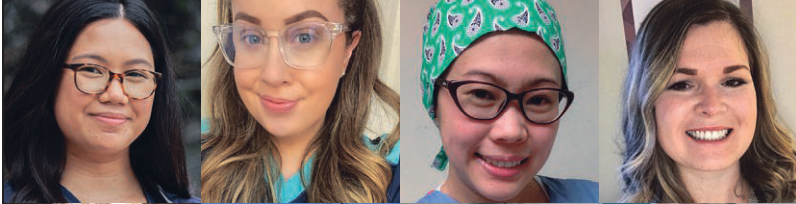
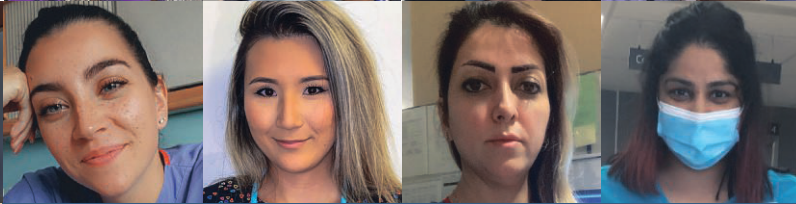


**SERVING OUR  
COMMUNITIES**  
CUPE905

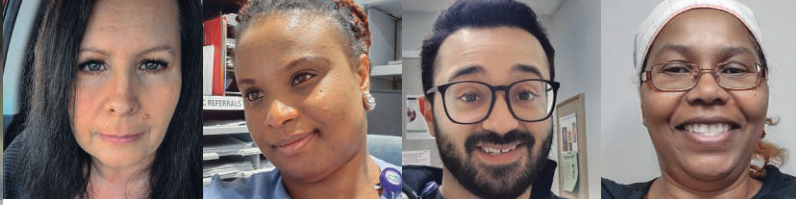
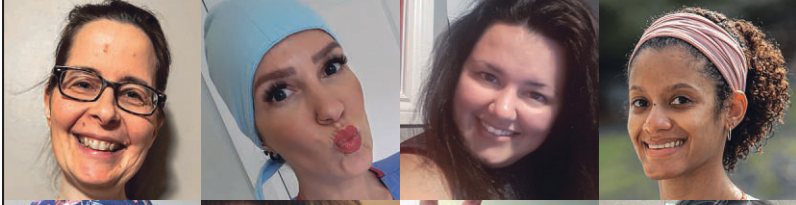
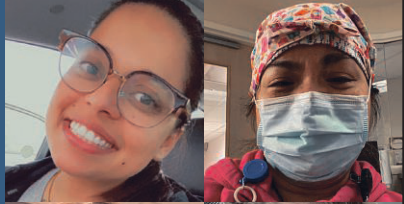
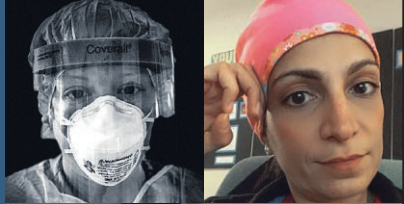




**SOUTHLAKE**  
REGIONAL HEALTH CENTRE

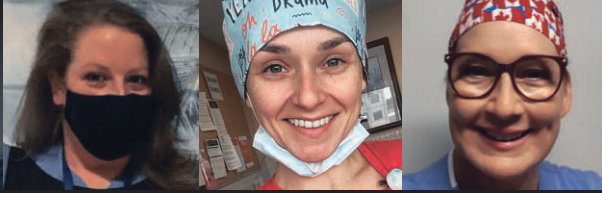
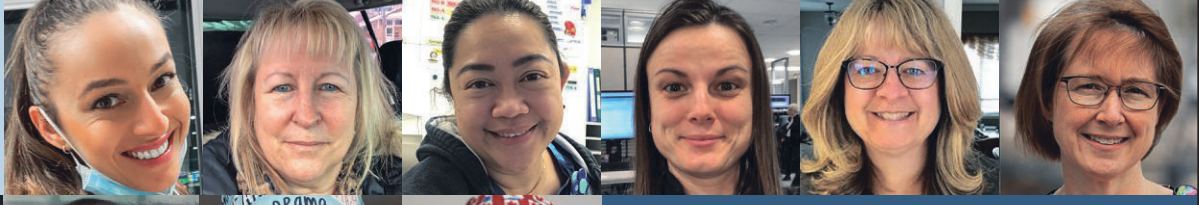


Thank you  
Southlake  
Nurses!



Celebrating the faces behind the masks  
through Nursing Week 2021

#WeAnswerThe Call



You can support our  
health care heroes.  
Visit [southlake.ca/donate](https://southlake.ca/donate)  
to donate.